

**DETASULTRA<sup>®</sup>**  
*solutions around the cable*



**1896 DETAS<sup>®</sup>**



ENG



**DES FAMILY**  
**LIMITLESS SOLUTIONS**

**Entry system for cables with and without connectors**

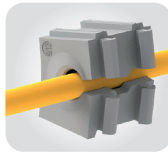
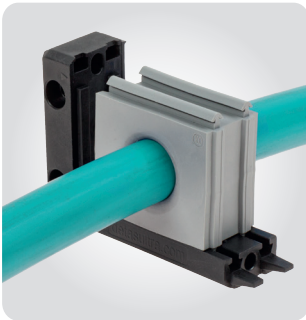


**DES 24**

**IP66**

Welcome to the DES (Detas Entry System) world. We offer limitless cable entry solutions with more than 50 different configurations from IP54 to IP66 with international certifications such as UL, EN45545, Marine, ATEX, Ecolab, etc.

Discover the unique features of the DES system, the overmolded gaskets, the free grommets position inside the frames and modularity.



You can choose from more than 15 different grommet series all self extinguishing to UL 94 V0, grey or black color.

If you choose the MX variant you have no cable limits! Just add levels and configure your entry solution as you prefer. If you need a robust and smart application the DES series is the right solution.



**DES 24 MX2**

**IP54**



**IP54  
IP66**

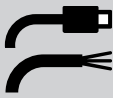
**NEMA  
12, 4X**

**UL TYPE  
12, 4X**



**ECOLAB**



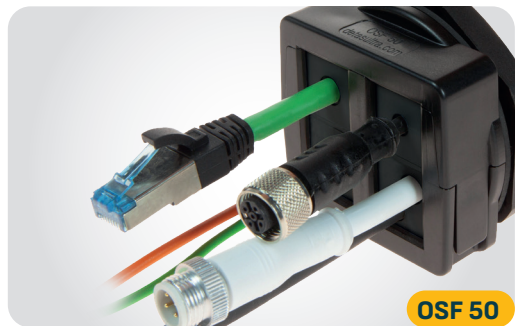
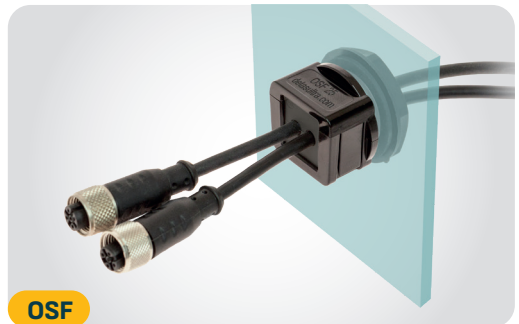


## Splittable cable glands for cables with and without connectors

Passing through walls or panels with one or many pre-wired cables is no longer a problem with the DetasUltra DESPRED and OSF splittable cable glands. With standard or higher degree of protection, from IP54 to IP66, they also offer UL, EN45545, Marine, ATEX, Ecolab, certifications. All models have one features that distinguishes them from all the other products on the market. In fact, the same divisible cable gland can be used for both small and large grommets. Hence a significant savings in inventory cost.

The DESPRED splittable cable glands series offers IP66, Nema4X degree of protection, overmolded gasket and international certifications such as UL, EN45545, Marine, ATEX, Ecolab. They are available M25, M32 or M63 and can be used with small SPP or large SPG grommets. The DESPRED 63 can be used with 4 small or 1 big grommets.

The OSF family is available with 7 different sizes, from M16 to M63 and some of them are also available without locknut. They can be used with small SPC and Large SPL grommets for single, double or quadruple wiring. They offer maximum flexibility and quick installation as well as a clear price advantage.



**IP54  
IP66**

**NEMA  
12, 4X**

**UL TYPE  
12, 4X**



**HL3  
EN 45545-2**



**ECOLAB**



**UL94-V0**

## Focus on Food&Pharma

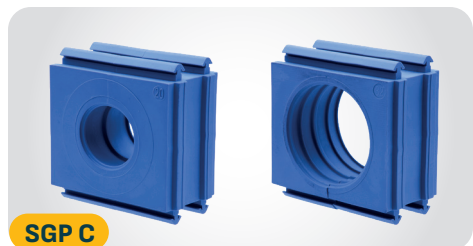
## Hygienic Design

The FDA certified material, the specific design and the distinctive color make DetasUltra CLEAN series the optimal choice for food and pharmaceutical industries. The rounded shape without edges and the absence of dirt accumulation facilitates the cleaning of the product, while the blue color is easily identifiable during processing.

The DES 24 CLEAN and DES Q CLEAN frames are used for cables with and without

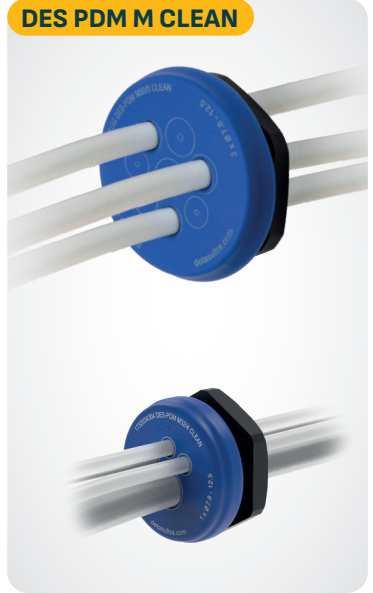
connectors thanks to single, double or quadruple FDA blue grommets. They can route up to 40 cables offering a very appealing aesthetic for food machinery. Mounting is done from the internal part of the panel thanks to the overmolded inserts.

The DES PDM CLEAN family has a smooth external surface without screws seats, receptacles for residues and dirt. A range of metal detectable clamps and related brackets complete the range.

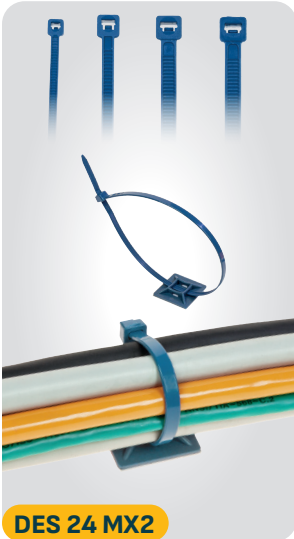




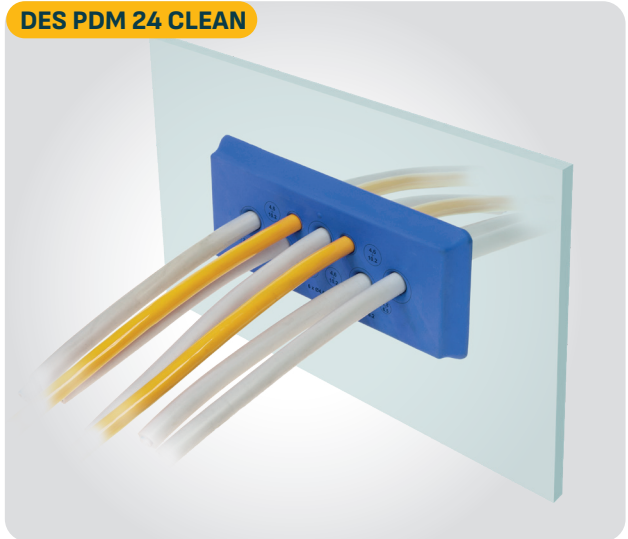
**DES Q CLEAN**



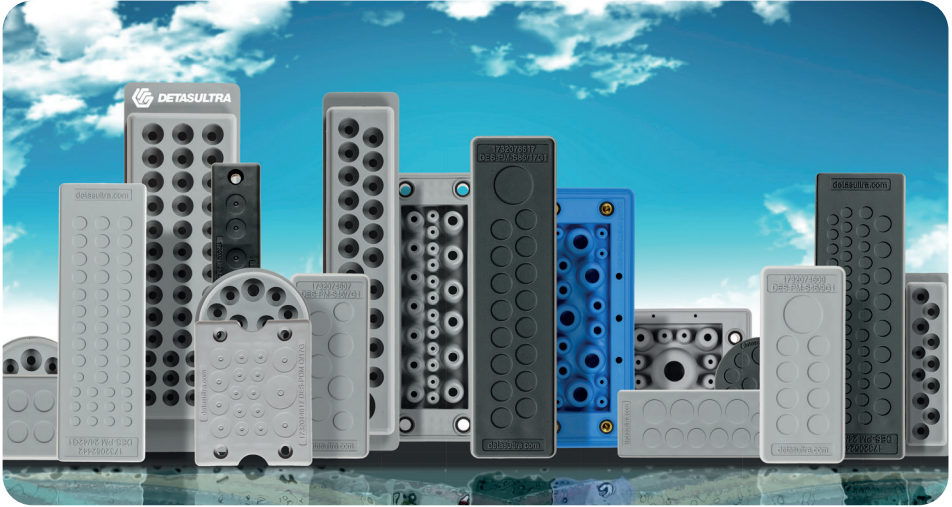
**DES PDM M CLEAN**



**DES 24 MX2**



**DES PDM 24 CLEAN**

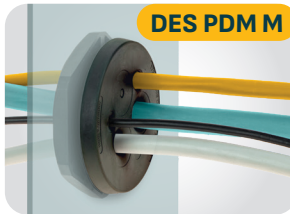


## Cable entry plates for cables without connectors

To save space and time during installation and cable routing through panels or machines the best solution is to adopt DES Cable Entry Plates solutions. A multitude of models makes it easier to select the most suitable option for any operative applications. It can happen either in difficult areas of the machine, as well as in case of a high quantity of cables. Our solutions offer high levels of water and

dust protection and a good strain relief function that can be improved thanks to the unique available accessories.

They are offered in grey and black colors both self-extinguishing according to UL94-V0. The most cost effective solution (DES PM) features high protection (IP65) and offers a high strain relief function thanks to the patented double membrane.



**IP65  
IP66  
IP68**

**NEMA  
12, 4X**

**UL TYPE  
12, 4X**



**ECOLAB**





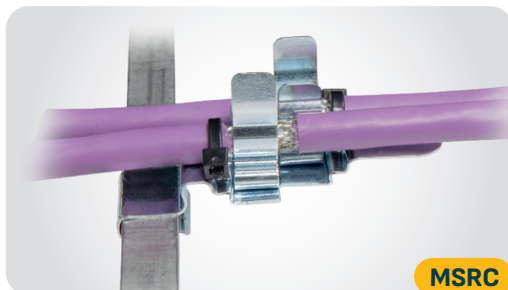
## Strain relief modules and EMC shielding clamps

Strain relief cable fixing combs are used in electrical switchboards and equipments to keep the cables in place whilst providing strain relief in accordance with EN 62444. The cables can be fixed with standard plastic ties or reusable ties. To create a multi-level strain relief system, spacers can be used in presence of a high density of cables. Different installation solutions are available, through simple screw fixing with added bushings or installation on the 35mm DIN rail.

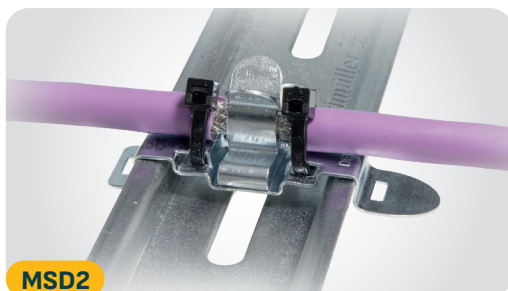
Cable shielding is one of the key factors in avoiding electromagnetic interferences, but the effectiveness of the shielding is often compromised if proper grounding is not guaranteed. DetasUltra offers clips, clamps, braids, frames and grommets to easily and effectively ground the cable shielding. They are available in more than 30 different series for DIN rail, earthing busbar, screw fixing, etc. We also realize custom solutions according to the customer's drawing.



APD



MSRC



MSD2

**DIN RAIL  
SINGLE PHASE  
POWER SUPPLIES**

- 24VDC
- 2A, 3A, 5A, 10A, 20A
- Also available 12VDC, 48VDC
- Active PFC (eff.>94%)
- Smallest size on the market



**480  
W**

**48 mm**

**DIN RAIL  
TWO-THREE PHASE  
POWER SUPPLIES**

- 24VDC
- 10A, 20A, 40A
- Also available 48VDC
- Active PFC (eff. >95% - 20, 40A)
- RS485 communication
- Remote control
- 1,5x transient power for 5s
- Inrush current 10 A @400VAC

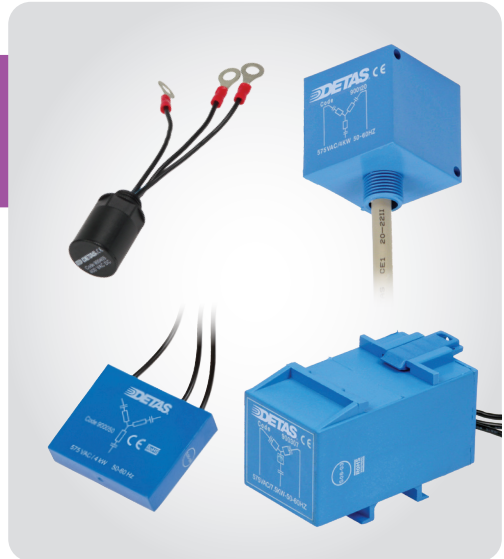




## TRANSIENT SUPPRESSORS FOR INDUCTIVE LOADS SUCH AS MOTORS, CONTACTORS, SOLENOIDS.

Transient suppressors are designed to protect electronic circuits from temporary voltage spikes typically generated by insertion and disinsertion of inductive loads.

- General purpose or for threephase motors
- Power, up to 20 kW
- With terminal block or wires



## EMI/EMC POWER LINE FILTERS

Power Line filters are electronic devices that reduce electrical interferences, protecting connected devices and improving power quality network.

- Single/three phase and Single/Double stage models
- Up to 200A
- DIN rail and 3phase+Neutral versions available
- High insertion loss
- Medical versions available



## CONNECTION INTERFACES

- Modular design for keystone socket, Schuko 230V
- Assembling from the inside, screws included
- Screw safety door, lockable
- Now also available with MCB

IP67



## INDUSTRIAL ETHERNET SWITCHES

- Unmanaged and POE versions available
- Metal body, DIN rail
- 5/8/16 ports - 10/100 Mbits or 1 Gigabits
- Compatible with all Ethernet based fieldbus



## PANEL MOUNTING CONNECTORS

- Up to IP67 with cap
- Plastic or metal, diameter 16, 20, 22 mm
- RJ45, USB2.0, USB3.0, USB-C HDMI, etc.

up to  
IP67



## M8-M12 CONNECTORS

- Standard and customized models
- Quick delivery time





## MACHINERY LED LIGHTING

- Wide range of solutions
- For on-board machines or for electrical panels
- Plastic and metal bodies, for standard or harsh environments
- Up to 7 colors
- With cable or M12 connector
- Up to IP69K
- UL approved models

## SIGNAL LIGHTING DEVICES

- Modular and integrated solutions with or without buzzer
- Tower lights with plastic or metal bodies
- From 1 to 5 colors + buzzer
- With cable or M12 connector
- Up to IP66





[detas.com](https://detas.com)



[detasultra.com](https://detasultra.com)

**Detas SpA**

Via Treponti, 29  
25086 (BS) Italia  
Tel. +39 030 25 94 120  
[info@detasultra.com](mailto:info@detasultra.com)

ISO9001 / ISO14001 certified company

**DETAS**.GROUP

